



**MISHA ESSENTIALS**

HAIR & MAKEUP SERVICES SUPPLIER

**CURLING TOOLS INSTRUCTION MANUAL**

[WWW.MISHAESSENTIALS.COM](http://WWW.MISHAESSENTIALS.COM)

## YOUR CURLING ASSISTANT



BEFORE



AFTER

Misha Essentials curling tools are a simple and fast way to set dry or wet hair for impressive results. Select the type of curl you want, roll the hair, then set the hair with setting spray – without the hassles of carrying a full set of rollers. This one tool will replace your magnetic, plastic, velcro, tube, sponge or hot rollers...taking up no space and provide a hygienic simplified alternative. In fact, they make setting hair on set, for weddings and photography sessions a breeze.

## TOOLS AND PRODUCTS



3 SIZES OF CURLING TOOL



TAIL COMB



4 JAW CLAMPS



SOFT BRISTLE BRUSH



BOBBY PINS



DUCKBILL CLIPS



LIGHT TO MEDIUM HOLD HAIR SPRAY



CAPE



DRYER BAG



END PAPERS

# QUICK START

FOLLOW THESE INSTRUCTIONS TO GET STARTED USING THE CURLING TOOLS RIGHT AWAY.



## STEP 1

PREPARE AND SECTION THE HAIR

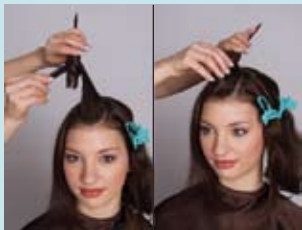
Section the hair into five sections, two sections in the front and three in the back.



## STEP 2

SATURATE WITH HAIR SPRAY

Brush the first section straight up and saturate with hair spray.  
(Note: Section must be as wide as the tool)



## STEP 3

ROLL HAIR

- Hold the tool in one hand, hair in the other.
- Start in the middle of the section, wrapping hair around the curling tool, making sure that the ends are tucked in smoothly.
- Roll using both hands, with even tension to the scalp.



## STEP 4

RELEASING HAIR FROM CURLING TOOL

- While holding the curling tool with one hand, cup the rolled hair with the other hand.
- In one quick motion, pull the curling tool out.



## STEP 5

PINNING, SECURING AND DRYING THE SET

- Pin roll to base of the curl with one long duck clip, two bobby pins or roller set clips – one each side of the rolled hair.
- Lightly mist the hair with spray.
- Use the dryer bag or hood dryer for 10 – 25 minutes on a low to medium heat.
- Release the curls and style.

### Special note:

For smaller Tighter Curls use the smallest Curling tool with medium hair spray  
For medium Looser Curls use the medium Curling tool  
For larger Curls use the large Curling tool

# FULL INSTRUCTIONS



## STEP 1

- After the hair is brushed out, make sure the hair is completely dry.
- Part the hair from the top of the head to the back of the ear with your tail comb, repeat on each side.
- Twist each front section, secure with claw clamp.
- Section the back of head from the top of the head straight down the middle. Twist each section and secure with claw clamps.



## STEP 2

- Now you are ready to start rolling with your curling tool. Use one of the three sizes of curling tools.
- Measure the diameter across the center of the curling tool.
- The large curling tool is about 2 inches across, so section your section 2 inches across, 4 inches in length.
- The medium curling tool is 1 inch across, and the small curling tool ½ inch across.



## STEP 3

- Start rolling the front sections first. Using your tail comb, take a section size about the width of the curling tool.
- Use your brush to brush the hair straight up, then saturate with light to medium hold hair spray.
- Brush through product.



## STEP 4

- Hold the section taut with even tension. Hold the curling tool in one hand, and the hair section in the other.
- Pinch the hair wrap, tightly around the curling tool.
- If the hair is layered, you will start wrapping from the shortest layer.

### Special note:

You can use end papers if you want a smoother, more perfect curl, but this will add more time to your set.



# REMOVING THE CURLING TOOL



## STEP 5

- Once you have wrapped the hair around the curling tool, make sure the ends of the hair are smoothly tucked into the middle of the tool.
- Hold your roll with both hands.
- Start to roll to the scalp, ensuring that you maintain the tension when rolling.
- Roll firmly down to the scalp. Your curling tool should be in the middle of the section.
- You will also be able to see both tail comb parts on either side of the roller.



## STEP 6

- Your roll is tightly rolled to the scalp. Hold the tool with one hand and place the other hand on top of the roll.
- Using your hands to cup the curl, quickly pull the tool out of the roll.
- You can secure the roll on each side with one of the following:
  - Duckbill clip
  - Bobby pins
  - Roller set clips
- Always secure only at the base of the curl.



## STEP 7

- Once the first roller is secured to the scalp, repeat the same procedure down the front sections.
- You should have a minimum of 3 rollers down each front section.
- Using a smaller tool you may have as many as six rolled sections.

CHECK

If the shape is falling to one side you haven't saturated evenly with spray. If the hair is thin, you may need to use an end paper. If the hair is short or a choppy layered hair cut, you will also need to use an end paper.



## STEP 8

- Adjust your back section, so the first two sections are at the top of the head.
- Roll two sections at the crown of the head, to create a triangle.

# FINISHING, DRYING, AND STYLING



## STEP 9

- After you have rolled your two triangle crown sections, section the back into three sections.
- When the entire head is wrapped, you should have a minimum of 17 rolls with the large tool.
- With the smaller tool, you may have as many as 30 rolls.

## NOTE

Practice getting faster by noting a start time from when the first roller is put in and a finish time when you put the last roller in.

With practice, you will be able to get your time down to 10 – 12 minutes for the whole head.

For weddings and fashion shows, you will be able to do six sets in an hour.



## STEP 10

- Once the entire head is completed, mist hair spray on the top of the completed rolls.
- Dry with a Misha Bag Dryer or a Hood Dryer on a low – medium heat setting.
- Dry your speed set depending on the thickness of the hair.
- Shorter hair will take 10 – 15 minutes on medium heat, while longer hair will take 15 – 25 minutes.
- You must use heat to dry curls, air drying will not work.
- Once the curling tool set is dry, remove your dryer bag.
- Let the hair cool for five minutes, and then test a curl to ensure that it is really dry.
- Once the hair is dry, remove all pins.
- Comb out the curls using your fingers. If the hair is crunchy, emulsify the hands with some liquid laminator.
- Start to separate the curls from the neck up to the front of the head.
- Style the hair as you choose.





## IMPORTANT SAFETY INFORMATION

WARNING: FAILURE TO FOLLOW THESE SAFETY INSTRUCTIONS COULD RESULT IN INJURY OR DAMAGE TO HAIR. BEFORE HEATING OR USING THE DRYER BAG ENSURE THAT THERE IS A COMFORTABLE ZONE AROUND THE HEAT SOURCE, HAIR AND BAG. LEAVING DRYER BAG UNATTENDED MAY CREATE A FIRE HAZARD. USERS WHO USE MISHA ESSENTIALS TOOLS AND DRYER BAGS ACCEPT FULL RESPONSIBILITY FOR INJURY AND DAMAGES.

LEARNING MORE, SERVICE AND SUPPORT:

FOR MORE INFORMATION, GO TO [WWW.MISHAESSENTIALS.COM](http://WWW.MISHAESSENTIALS.COM)